

# Hydraulic Welded Cylinders | 800 SERIES 4" to 8" Bore Size, 3000PSI



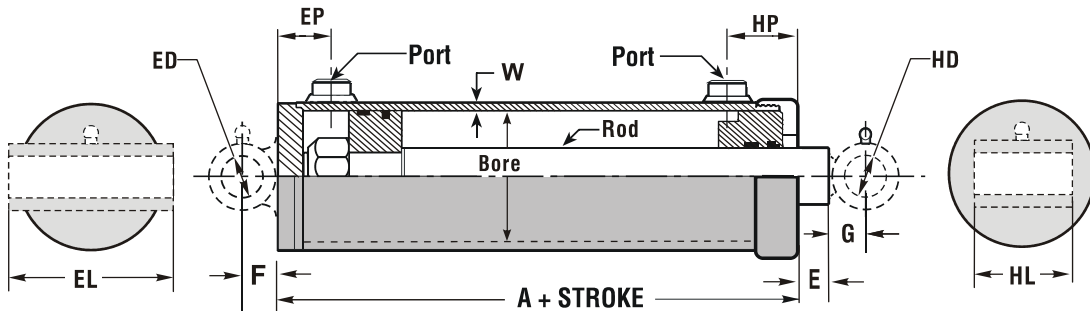
### Material

- |  |   |
|--|---|
| Gland – High Grade Ductile Iron                      | Piston – High Grade Ductile Iron        |
| Tube – Cold Drawn Precision Tubing                   | Rod – Chrome Plated C1045 Steel         |
| End Caps – C1045 Steel                               | End Mounts – C1045 Tube or Casting Iron |
| Gland Seals – Polyurethane U-cup                     | Rod Wiper – Urethane Snap In            |
| Piston Seal – Urethane ring with nylon backup washer | Paint Color – Semi-Gloss Black          |

800 series cylinder is design for 3000 PSI hydraulic service

800 Series cylinders can be customized to your specifications, contact us with your detail requirements

**3000PSI Rated**



### Dimensional Data (Unit: inch)

Bore	Rod	Wall	Port	A	E	G	ED	HD	EL	EP	HP	F	HL
4"	2"	1/4"	1/2" NPTF	7 1/8"	7/8"	13/16"	1.265"	1.265"	4 3/4"	1 3/4"	3 3/8"	15/16"	2 1/2"
4.5"	2 1/2"	1/4"	1/2" NPTF	8 3/16"	7/8"	13/16"	1.265"	1.265"	5 1/4"	2"	3 3/8"	15/16"	2 3/4"
5"	2 1/2"	1/4"	3/4" NPTF	8 3/4"	7/8"	1.0"	1.515"	1.515"	6"	2 1/8"	3 5/8"	1 1/8"	2 3/4"
5.5"	3"	1/4"	3/4" NPTF	8 15/16"	7/8"	1.0"	1.765"	1.515"	7"	2 3/16"	3 5/8"	1 1/4"	4 1/2"
6"	3"	1/4"	3/4" NPTF	9"	7/8"	1.0"	2.062"	1.515"	7"	2 1/4"	3 5/8"	1 1/2"	4 1/2"
7"	3 1/2"	3/8"	1" NPTF	9 5/8"	7/8"	1 1/4"	2.515"	1.765"	8 1/4"	2 5/16"	4"	1 3/4"	4 3/4"
8"	4"	3/8"	1" NPTF	10 11/16"	7/8"	1 3/8"	3.015"	2.015"	9 1/4"	2 3/8"	4"	2.0"	4 3/4"

Notes: 1.) List above are typical dimension regarding our design. 2.) Optional size is available for rod, port location and mounting dimension. Please refer to Mounting Style details on page 5– 14.

### Model No. Designation



To specify other modification, such as stop tube, port angle, rod extension, special port, please fill our inquiry worksheet on page 15.

